

CS119 – Midterm Statistics Report

Spring 2026 – Sections CGC & SIE

April 2026

Overview

The midterm examination was taken by **128 students** (81 CGC, 47 SIE). The pass threshold is **4.0**. **110 students passed** (85.9%) and 18 failed (14.1%).

	<i>n</i>	Mean	Median	SD	Min	Max	Pass rate
All	128	4.62	4.75	0.61	3.00	5.75	85.9%
CGC	81	4.58	4.50	0.60	3.00	5.75	87.7%
SIE	47	4.69	4.75	0.64	3.50	5.75	83.0%

TABLE 1 – Grade statistics (scale 1–6).

Grade distribution

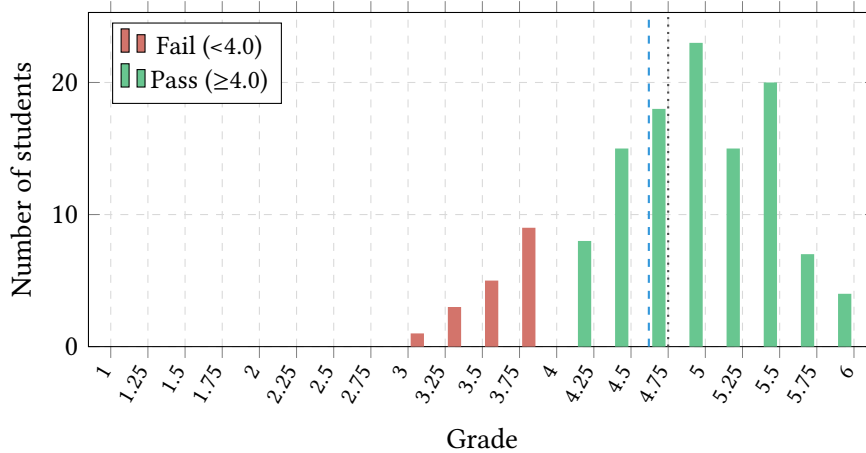
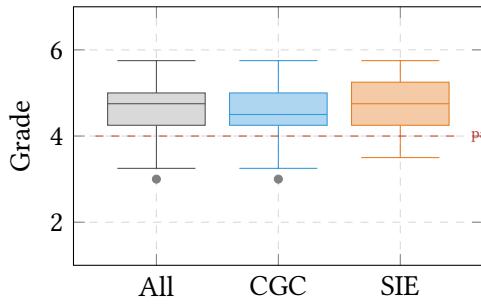


FIGURE 1 – Overall grade distribution. Dashed : mean. Dotted : median.

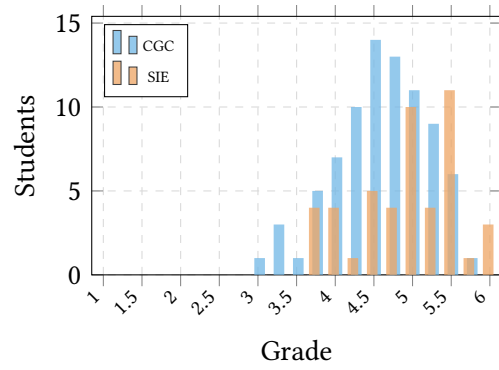
Part 1 – Multiple Choice Questions (QCM)

The QCM part contains 16 questions (3 pts each), for a maximum of 48 pts.

	Mean	Median	SD	Min	Max
All	38.48	39.00	5.39	21.00	48.00
CGC	38.26	39.00	5.29	21.00	48.00
SIE	38.87	39.00	5.59	27.00	48.00



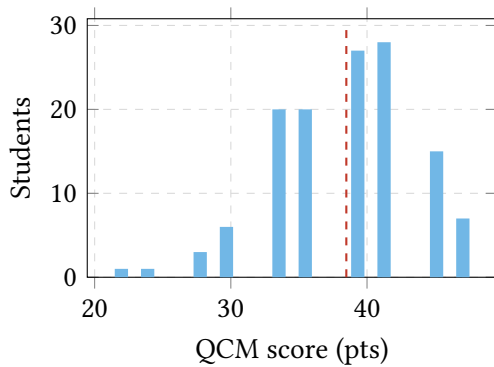
(a) Boxplot by group.



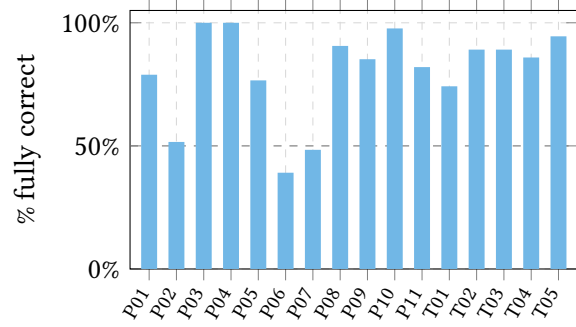
(b) Grade distribution : CGC vs SIE.

FIGURE 2 – Grade distributions by section.

TABLE 2 – QCM score statistics (max 48 pts).



(a) QCM score distribution.



(b) QCM per-question : % fully correct.

FIGURE 3 – QCM results.

Part 2 – True/False Questions (T/F)

The T/F part contains 10 questions (+1/-1 pt), for a maximum of 10 pts.

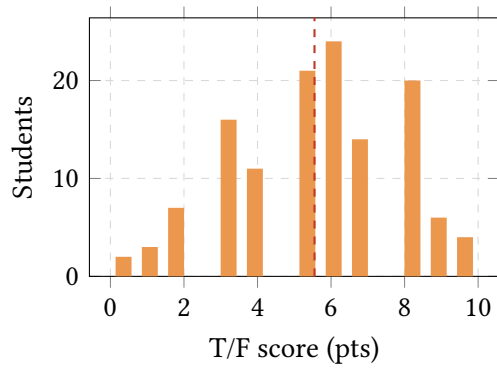
	Mean	Median	SD	Min	Max
All	5.55	6.00	2.27	0.00	10.00
CGC	5.40	5.00	2.35	0.00	10.00
SIE	5.81	6.00	2.11	2.00	10.00

TABLE 3 – T/F score statistics (max 10 pts).

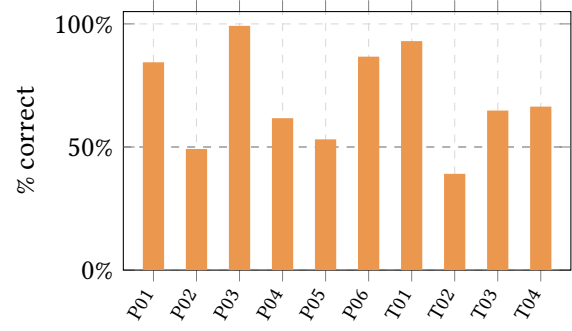
Part 3 – Open Questions

The open part contains 2 questions (OPEN-A, OPEN-B). Maximum observed score : 12 pts.

	Mean	Median	SD	Min	Max
All	6.65	7.00	2.67	0.00	12.00
CGC	6.35	7.00	2.73	1.00	12.00
SIE	7.17	8.00	2.50	0.00	11.00



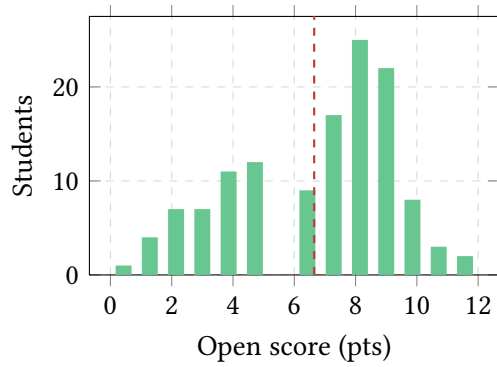
(a) T/F score distribution.



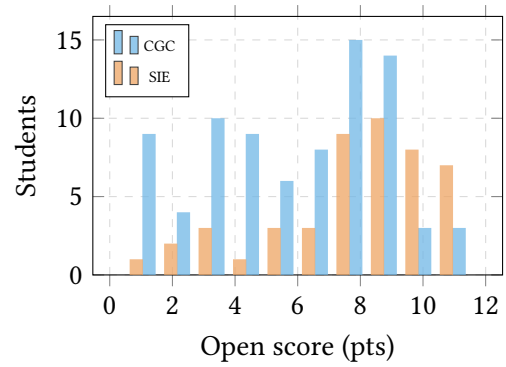
(b) T/F per-question : % correct.

FIGURE 4 – T/F results.

TABLE 4 – Open question score statistics.



(a) Open score distribution (all).



(b) Open score distribution by section.

FIGURE 5 – Open question results.

Summary – Raw score breakdown

Part	Max possible	Mean	Median	SD	Min	Max obs.
QCM	48	38.48	39.00	5.39	21.00	48
T/F	10	5.55	6.00	2.27	0.00	10
Open	12	6.65	7.00	2.67	0.00	12
Total	70	50.68	51.50	8.53	29.00	67

TABLE 5 – Raw score summary by part. “Max obs.” values are per-column maxima and may belong to different students (e.g. the highest total score is 67 pts : QCM 48 + T/F 9 + Open 10).