

# Lumière, ... approche sensible

UE-M Espace & Lumière  
printemps 2017

# Lumière & Météo



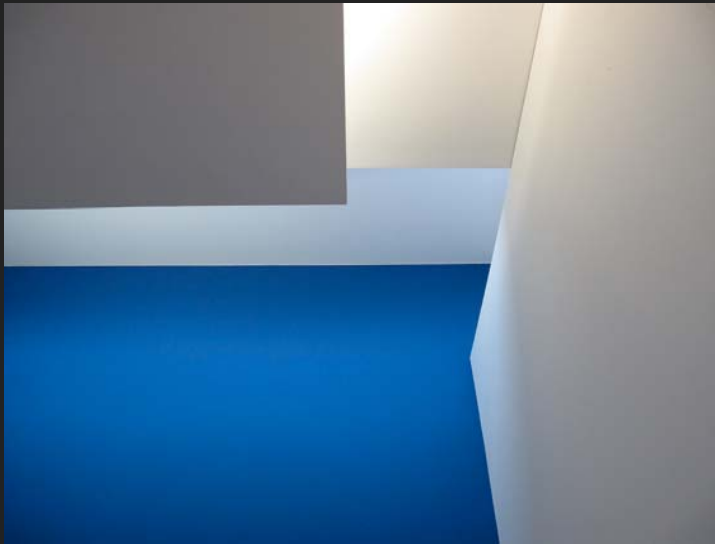
# Soleil



# Ombres



# Matières Colorées



# Lumières Colorées



# Textures, matières



# Reliefs

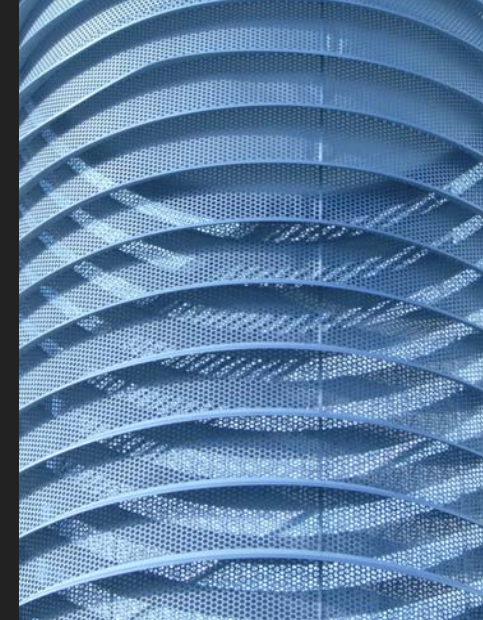




# Reliefs



# Transparences



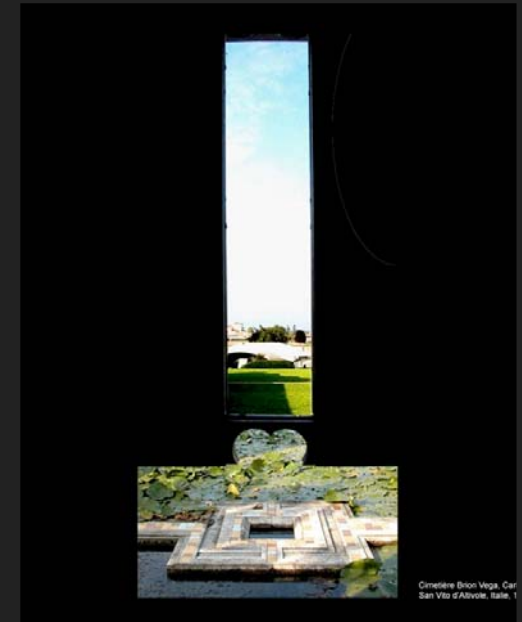
# Reflets



# Reflets



# Vues horizontales



# Vues Tamisées



# Vision du ciel



# Transitions lumineuses





# Appels lumineux



# Scénographie



# Scénographie



Peer Dalbruna



Peer Dalbruna

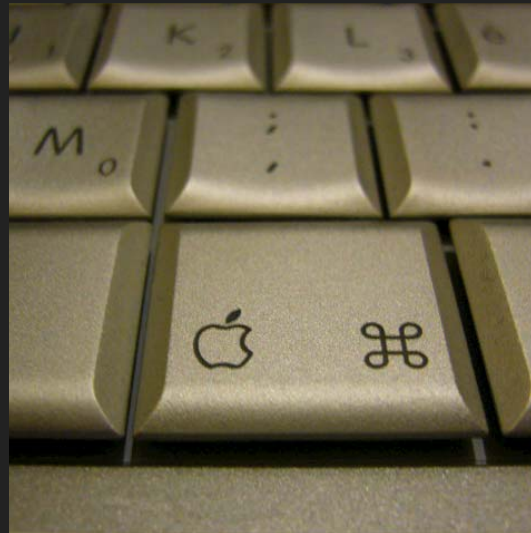
# Relation Sources / Objets



# Relation Observateur / Objet

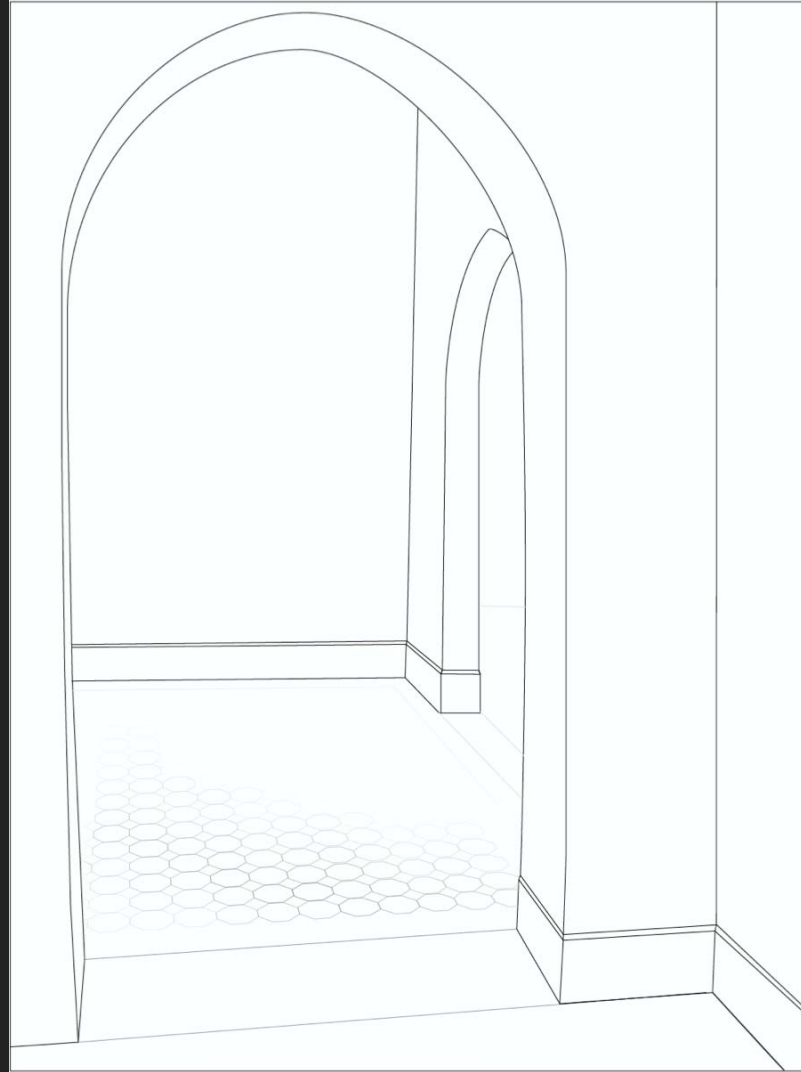


# Confort / Performance / Agrément visuel



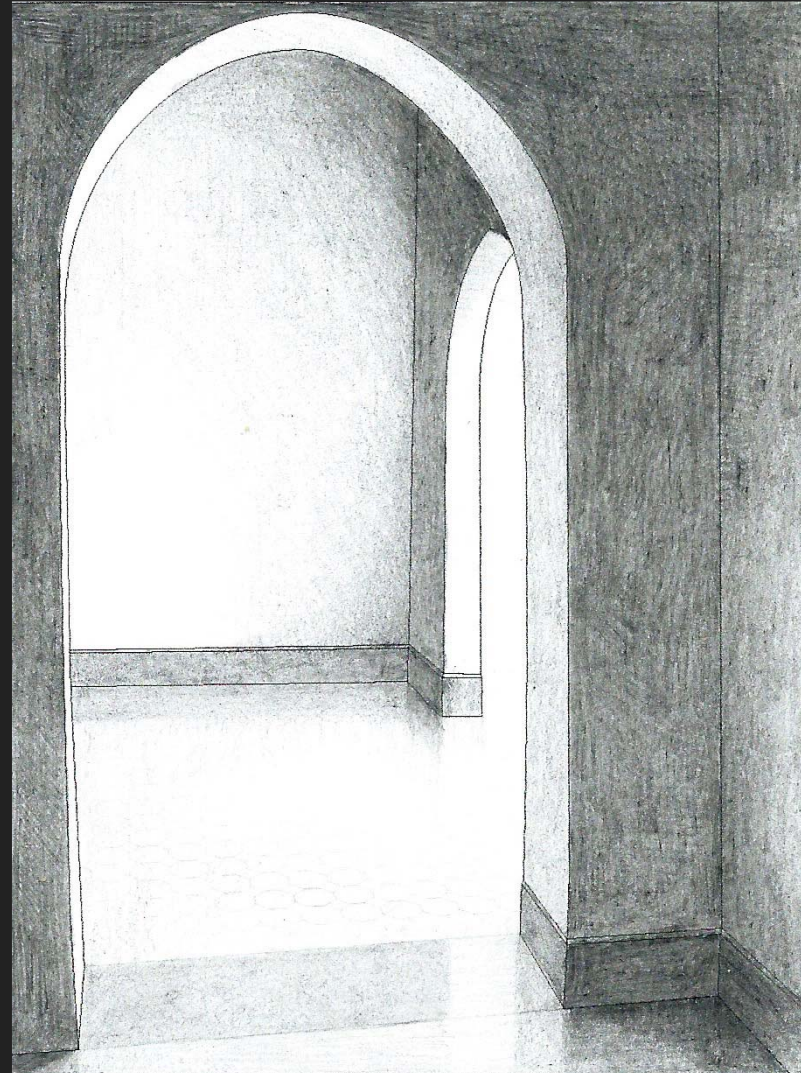
# Exercice Dessin

# Fond de dessin

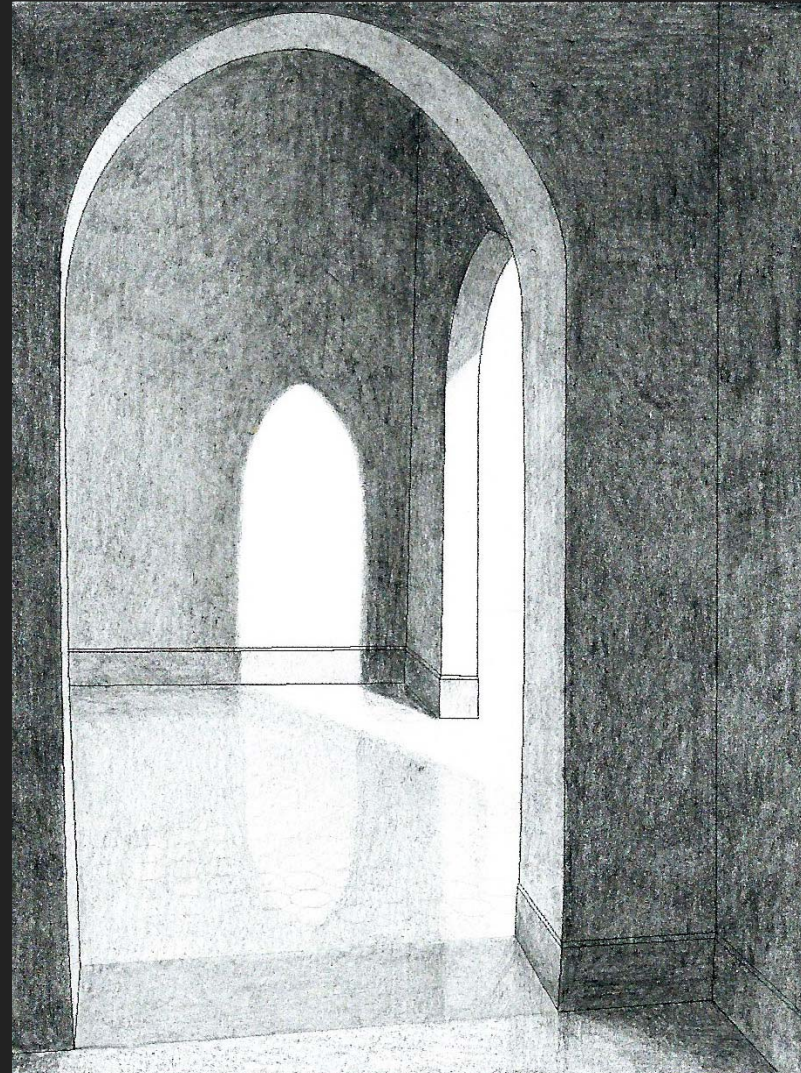




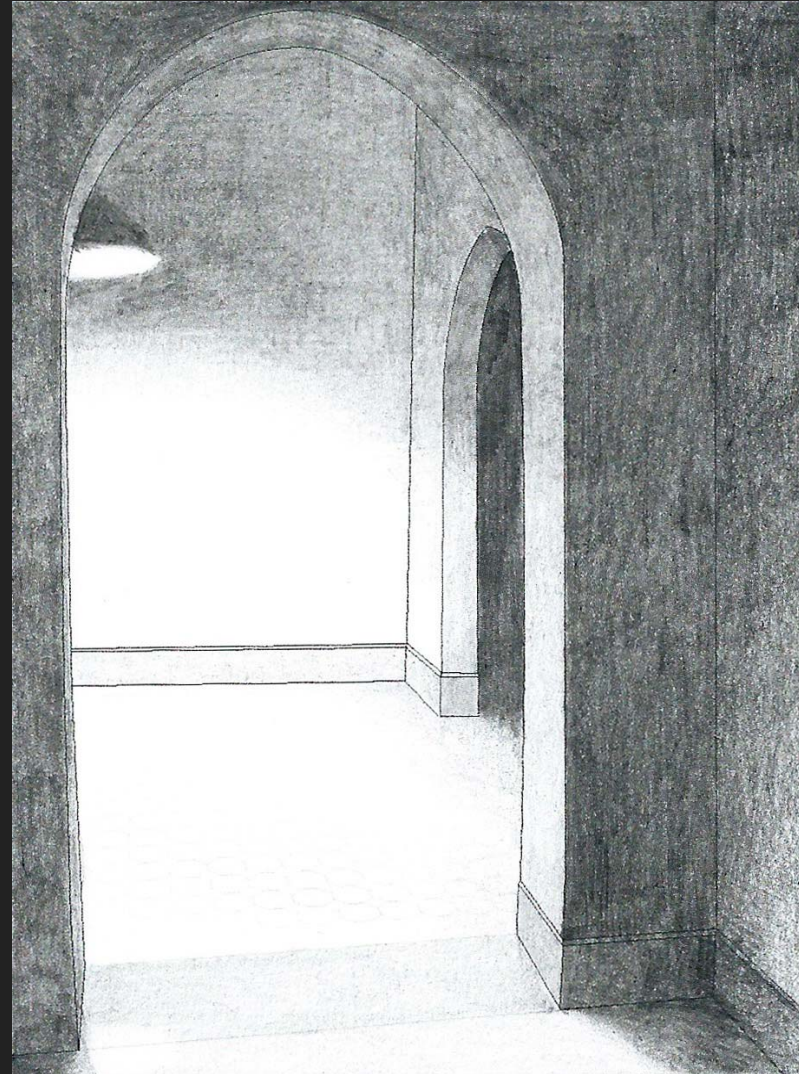
# Lumière diffuse



# Lumière directe



# Eclairage artificiel



# Support 2017

